

## Introduction

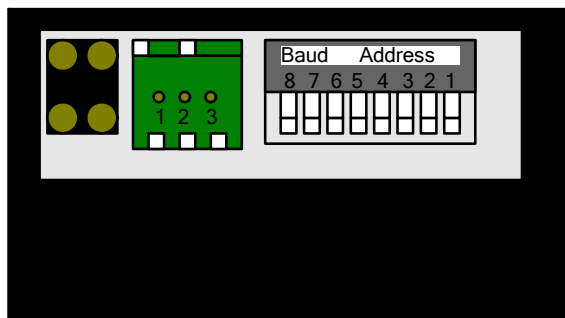
All AMC Digiflex Performance Servo drives come with an RS232 connection. Digiflex Performance drives with CAN communication or SynqNet™ communication include a secondary RS232 communication channel. AMC DriveWare software can connect to the drive using this channel in addition to the primary communication channel.

## Locating The Secondary RS232 Channel (CAN Drive)

The RS232 connector is located on the top edge of a CAN drive in between the CAN bus termination jumper block and the hardware address and baud rate switches.

**Note:** The switch settings have no effect on RS232 communication

### RS232 Connector CAN Drive



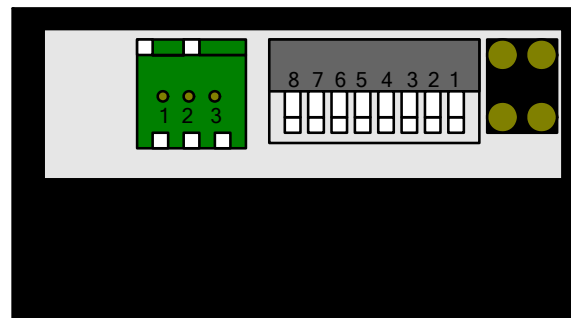
The mating connector (Phoenix p/n 1881338) ships with every Digiflex drive.

## Locating The Secondary RS232 Channel (SynqNet Drive)

The RS232 connector is located on the top edge of a SynqNet drive next to a set of switches

**Note:** The switches are reserved for future use and have no effect on RS232 communication

## RS232 Connector SynqNet Drive

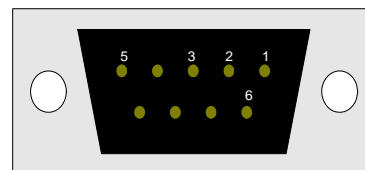


The mating connector (Phoenix p/n 1881338) ships with every Digiflex drive.

## Interfacing to the RS232 Port

To connect the RS232 port to a PC requires a cable. Most PCs (or USB to RS232 converters) have a 9pin D-sub serial port connection.

### 9-pin D-Sub Serial Connection



All that is needed is to connect the Transmit Data (TX) pin, Receive Data (RX) and Ground pins to the appropriate locations on the drive. The relationship is illustrated below

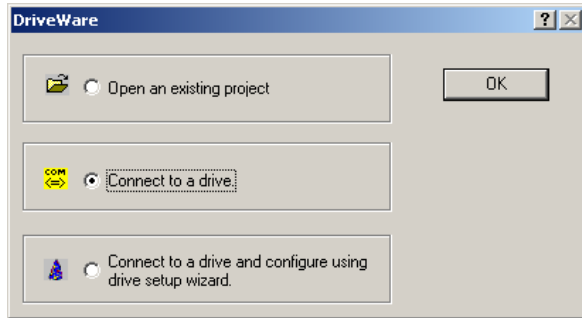
### PC to Digiflex Drive Connections

9-Pin D-sub			Digiflex Drive	
TX	3	TO	1	RX
RX	2		2	TX
GND	5		3	GND

## Establishing a connection with Drive Ware

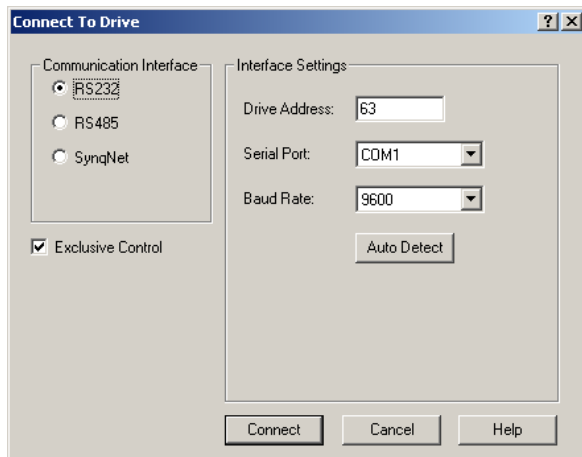
Once the necessary connections have been made, make sure the drive's logic power is applied. The steps to establish a connection using drive ware are:

1. Launch DriveWare application.
2. From initial dialog, select 'Connect to Drive' and press OK.

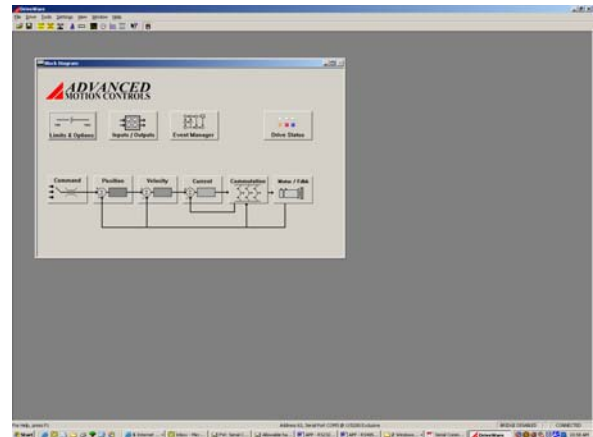


3. Select the RS232 communication interface. The default parameters from the factory are: **Drive Address 63** and **baudrate 115200** (some older drives may have a baudrate of 9600).

**Note: Exclusive Control** blocks the primary communication channel (CAN or SynqNet) from talking to the drive. Select this only during initial commissioning of the drive or when it is desired to change parameters with DriveWare. For monitoring or commanding over CAN or SynqNet, uncheck the **Exclusive Control** box.



4. Press 'Connect'. The main block diagram should appear.



5. The bottom status bar shows the connection parameters.

Address 63, Serial Port COM3 @ 115200 Exclusive