

Introduction

With the introduction of Windows® 7 there have been questions of compatibility between Windows® 7 and Advanced Motion Controls DriveWare™ software. Although the current DriveWare™ software release version 5.8.5 predates Windows® 7, it will install and run provided that the following steps are taken.

Note: *These steps have proved successful with Windows® 7 64-bit Enterprise, Windows® 7 32-Bit Professional. Home editions have not been verified.*

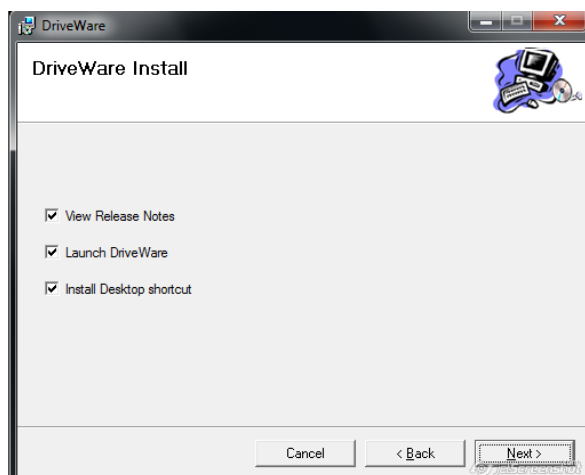
Before Installing DriveWare™

Before installing DriveWare, make sure you have the *Microsoft® Visual C++ 2005 Redistributable Package* installed.

Installing DriveWare™

Double-click the *setup.exe* program to start the installation process. During the installation several installations options are presented. Accept all defaults and leave these options checked. Failure to do so will result in DriveWare™ aborting the installation process.

DriveWare Installer Options



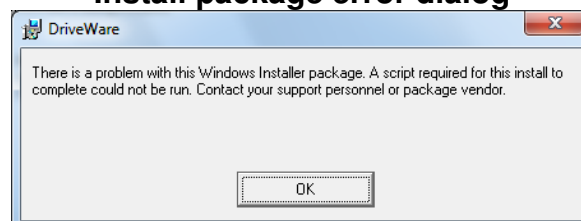
Installation Complete

The installation should complete successfully if these steps are followed.

Troubleshooting

If this error dialog is displayed, the default installer options were unchecked. Accept the installer defaults and check the installer options. See: *Installing DriveWare™*

Install package error dialog



If this error dialog is displayed, the *Microsoft® Visual C++ 2005 Redistributable Package* is not installed on your PC. See: *Before Installing DriveWare™*

Dll registration error dialog

